


wexner center store:

BOOKS | MAGAZINES | GIFTS | JEWELRY | HOUSEWARES | KID STUFF
37 ASSIGNMENTS



BOUND TO PLEASE

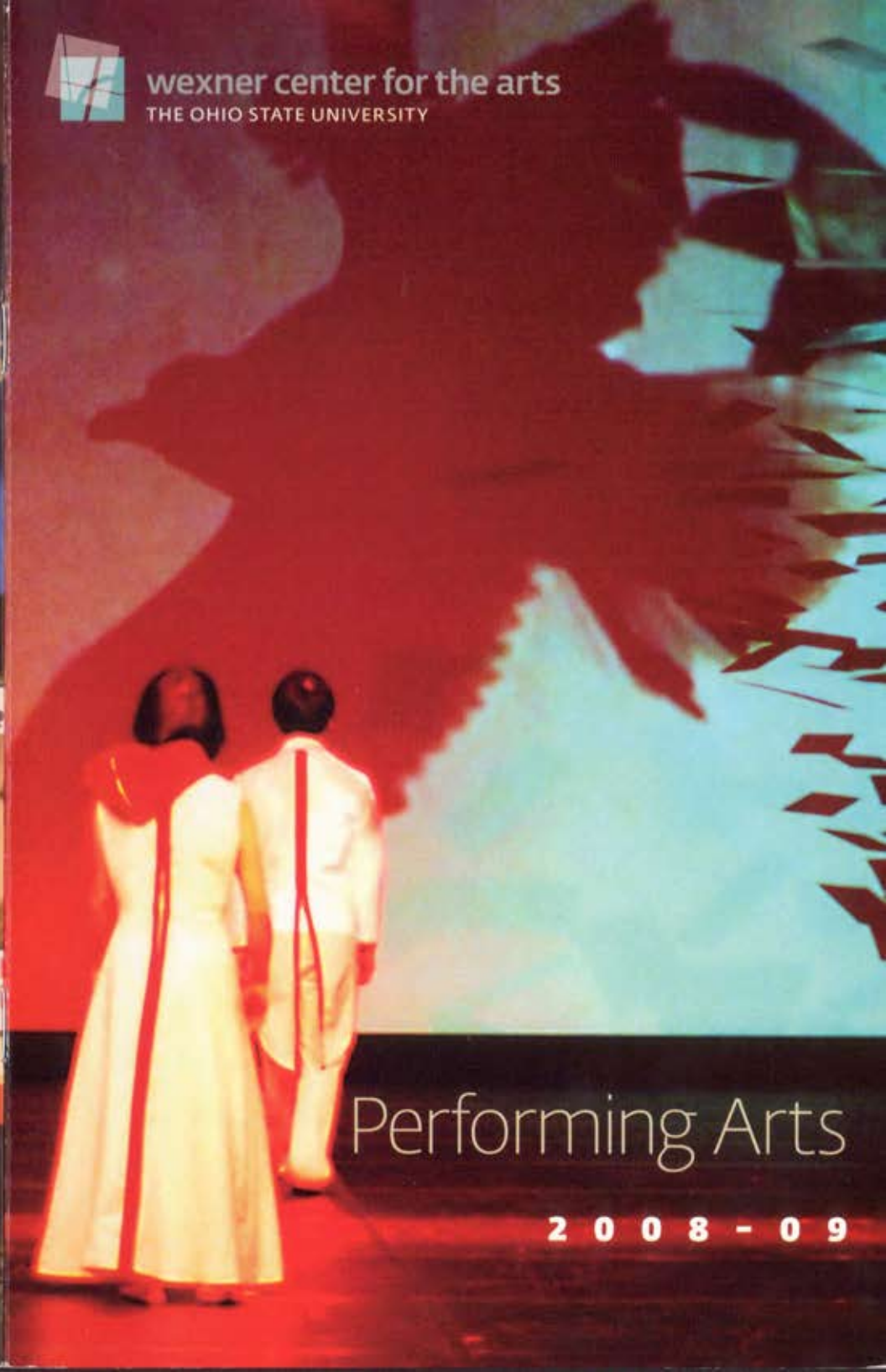
LOCATED ON THE LOWER LEVEL OF THE WEXNER CENTER | 1-800-678-6264
SHOP ONLINE AT WEXARTS.ORG

 Authorized Campus Store

Apple Education pricing available to Ohio State students,
faculty, and staff and Wexner Center patrons.



wexner center for the arts
THE OHIO STATE UNIVERSITY



Performing Arts

2008-09

Thank you for
joining us at tonight's
performance.

Special thanks to all Wexner Center members and
sponsors. Your support makes this event possible.

**PATRONS ARE REQUESTED TO TURN OFF SIGNAL WATCHES, PAGERS,
AND CELLULAR PHONES DURING PERFORMANCES.**

wexarts.org

It's your one stop source for everything
happening at the Wex. Watch video clips, listen
to podcasts and mixtapes, and read reviews.
Buy books, videos, and music. Share your
thoughts on our blog (at wexarts.org/wexblog),
and sign up for e-mail and text alerts to get the
latest news about all our programming.

MAJOR PERFORMING ARTS
SEASON SUPPORT



GENERAL SUPPORT FOR
THE WEXNER CENTER



wexner center for the arts
THE OHIO STATE UNIVERSITY

PRESENTS

Batsheva Dance Company Three

TUE, FEB 10 | 8 PM
Mershon Auditorium

CREDITS

This program is presented at the Wexner Center in association with **BalletMet** and in
conjunction with **Israel@60** programs in Columbus.

Major support for the Wexner Center's 2008-09 performing arts season is generously
provided by **Huntington Bank** and the **Doris Duke Charitable Foundation**.

Three has been funded by **New England Foundation for the Arts' National Dance
Project (NDP)**, with generous support by the Doris Duke Charitable Foundation, the
Ford Foundation, the Andrew W. Mellon Foundation, and the MetLife Community Con-
nections Fund of the MetLife Foundation.

Batsheva Dance Company's 2009 North America tour is supported by the **Israeli
Ministry of Foreign Affairs**.

All performing arts programs and events also receive support from the **Corporate An-
nual Fund of the Wexner Center Foundation** and **Wexner Center members**, as well
as from the **Greater Columbus Arts Council**, **The Columbus Foundation**, **Nationwide
Foundation**, and the **Ohio Arts Council**.

Accommodations are provided by **The Blackwell Inn**.

EVENT SUPPORT



TOUR SUPPORT



ADDITIONAL GENERAL
SUPPORT



ACCOMMODATIONS



PROGRAM

Batsheva Dance Company

Three

by **Ohad Naharin**

Costume Design **Rakefet Levy**
Lighting Design **Avi Yona Bueno (Bambi)**
Sound Design and Editing **Ohad Fishof**

Music

"Bellus": J. S. Bach, Goldberg Variations, performed by Glenn Gould

"Humus": Brian Eno, Neroli

"Secus": Chari Chari, Kid 606 + Rayon (mix: Stefan Ferry), AGF, Fennesz, Kaho Naa Pyar Hai, Seefeel, and the Beach Boys

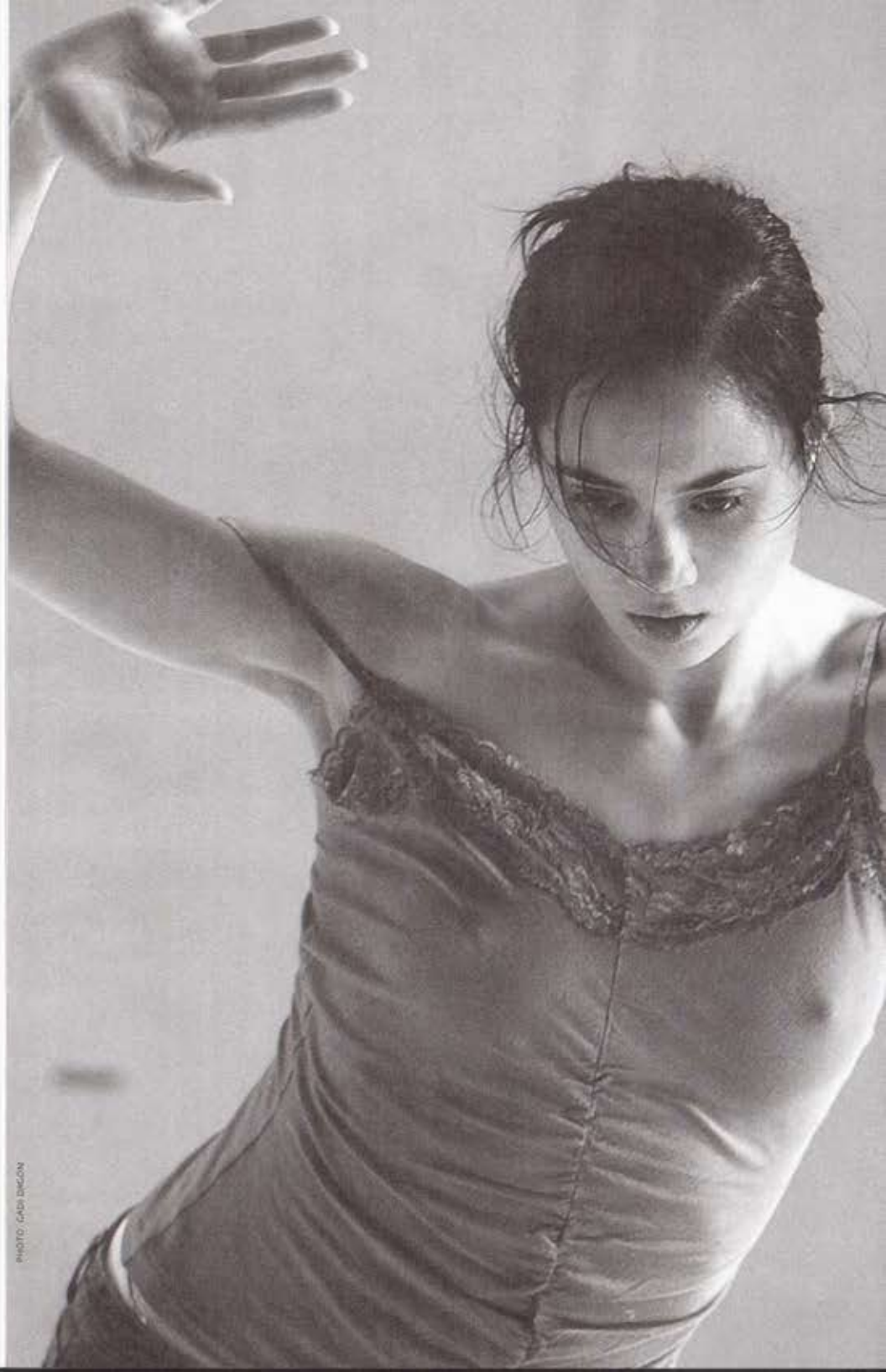
Performers

| | |
|-------------------|-----------------|
| Yaniv Abraham | Andrea Martini |
| Danielle Agami | Bosmat Nossan |
| Nir Benita | Rachael Osborne |
| Caroline Boussard | Guy Shomroni |
| Matan David | Bobbi Smith |
| Iyar Elezra | Tom Weinberger |
| Ariel Freedman | Adi Zlatin |
| Shani Garfinkel | Erez Zohar |
| Douglas Letheren | |

Preperformance Talk

The Wexner Center thanks John Giffin, a choreographer and professor in Ohio State's Department of Dance, for offering our audience a thoughtful introduction to *Three* and the work of Batsheva Dance Company.

70 minutes, no intermission





RESIDENCY ACTIVITIES

In addition to organizing public presentations of contemporary media, and visual arts, the Wexner Center actively seeks to provide opportunities for interaction among visiting artists, students, faculty, and staff of The Ohio State University, and members of the community. These activities and associated discussions led by authorities in many fields offer our audiences a better understanding of the creative process and the work of artists engaged by the Wexner Center.

While at the Wexner Center, members of Batsheva Dance Company conducted a master class for students in Ohio State's Department of Dance. At this session, students gained insight into the choreographic ideas of Ohad Naharin and the background and training of Batsheva's dancers.

ABOUT THE COMPANY

Batsheva Dance Company was founded in 1964 by Martha Graham and Baroness Batsheva De Rothschild. Batsheva's artistic integrity and innovation have earned it a reputation as one of the most inspirational and sought after dance companies—a true champion on the global map of performing arts. Batsheva operates throughout the year with its two companies (Batsheva Dance Company and the junior Batsheva Ensemble) and 40 dancers. With 250 annual performances in Israel and around the world, the company is considered Israel's leading cultural ambassador. Batsheva is applauded worldwide in the most prestigious theaters and festivals, including Lincoln Center, BAM's Next Wave Festival, Montpellier Danse, Berlin Festival, and many others. This is Batsheva's fourth visit to the Wexner Center, following appearances in March 1998, March 2003, and October 2006.

The company includes dancers from Israel and abroad who are encouraged to affirm their distinct creative gifts either in the rehearsal process or in the creation of their own works as part of the ongoing Batsheva Dancers Create series. Many of Batsheva's dancers developed their skills during an extensive training period in the junior company, the Batsheva Ensemble. The ensemble serves as a greenhouse for the next generation of dancers and choreographers, dedicating the majority of its time to Batsheva's comprehensive outreach and education program.

As the result of a unique collaboration between Sweden's National Riksteatern and Batsheva, a third Batsheva company, with an additional international cast of 16 dancers, performed Ohad Naharin's *Kamuyot* for school children and young adults throughout Sweden from December 2007 through May 2008.

Led by artistic director Ohad Naharin, and house choreographer Sharon Eyal, the company's 65 members—dancers, technical crew, and administration—are driven by a common vision to excel in art and to strengthen common human values through the power of creativity. To learn more about Batsheva, please visit batsheva.org.

Ohad Naharin (Choreographer and Artistic Director) began his training as a dancer with the Batsheva Dance Company. He came to New York one year later at the invitation of Martha Graham to join her company and was awarded a scholarship to attend the School of American Ballet. After a year with the Martha Graham Dance Company, he began studies at the Juilliard School of Music, as well as with Maggie Black and David Howard. He then joined the Maurice Béjart Company in Brussels for one season and made his choreographic debut in 1980 at the Kazuko Hirabayashi studio in New York. From 1980 to 1990 he performed and worked in New York, where he lived with his wife, dancer Mari Kajiwara, who died of cancer in 2001. In 1990 he was appointed artistic director of the Batsheva Dance Company.

Naharin has received many awards and honors including the Chevalier de l'Ordre des Arts et des Lettres by the French government (1998), two New York Dance and Performance (Bessie) Awards (for *Naharin's Virus* at the Brooklyn Academy of Music in 2002 and for *Anaphaza* at the Lincoln Center Festival in 2003), a Doctor of Philosophy *honoris causa* from the Weizmann Institute of Science in 2004, and the prestigious Israel Prize for dance in 2005. Naharin's works have been performed by many companies throughout the world including Nederlands Dans Theater, Frankfurt Ballet, Lyon Opera Ballet, Ballet Nacional de España (Madrid), Cullberg Ballet (Sweden), and the Opera National de Paris, among others.

Batsheva Dance Company

Artistic Director: Ohad Naharin
Executive Director and Coartistic Director: Naomi Bloch Fortis
House Choreographer: Sharon Eyal
Batsheva Company Manager and Stage Manager: Yaniv Nagar
Rehearsal Director: Luc Jacobs
Assistants to Rehearsal Director: Danielle Agami and Rachael Osborne
Technical Director: Roni Cohen
Chief Electrician: Yitzhak Assulin
Sound: David Bell and Oren Cohen
Technicians: Daniel Feinshten and Yuval Glikman
Wardrobe: Eyal Goldberg and Orner Yefman
Physiotherapists: Dudi Kishban and Martin Krahl
Photographer: Gadl Dagon
International Tour Production: Iris Bovshover
International Tour Management: Dina Aldor, Aladdin Ltd.
North American Tour Producer: David Eden, David Eden Productions, Ltd.
General Manager: Erica Charpentier
Company Manager: Pat Kirby
Visa Coordinators: Stonie Darling and Elise-Ann Kostantin

In association with H-Art Management
Harold Norris, President
Tel. (212) 666-0337
h-artmanagement.com

Batsheva Dance Company wishes to acknowledge the generosity of the American Friends of Batsheva, 220 Fifth Avenue, Suite 1301, New York, NY 10001, tel. 212-545-7182, e-mail afob@batsheva.co.il.

All donations to the American Friends of Batsheva are tax deductible. Please call or e-mail for more information

Batsheva Dance Company celebrates the America Israel Cultural Foundation (AICF) 70th anniversary. We wish to congratulate AICF on its remarkable impact on Israeli culture throughout the years and to acknowledge AICF's significant contribution to Batsheva's development and growth.

WEX UP NEXT



PHOTO: OSCAR NIEMEYER

WED-SUN, APR 1-5
Gallery D
Free

U.S. PREMIERE

William Forsythe *Monster Partitur*

See this tour-de-force performance installation piece during the opening days of the exhibition *William Forsythe: Transfigurations*, the first significant showcase of video and installation works by this vanguard choreographer to be presented in this country.

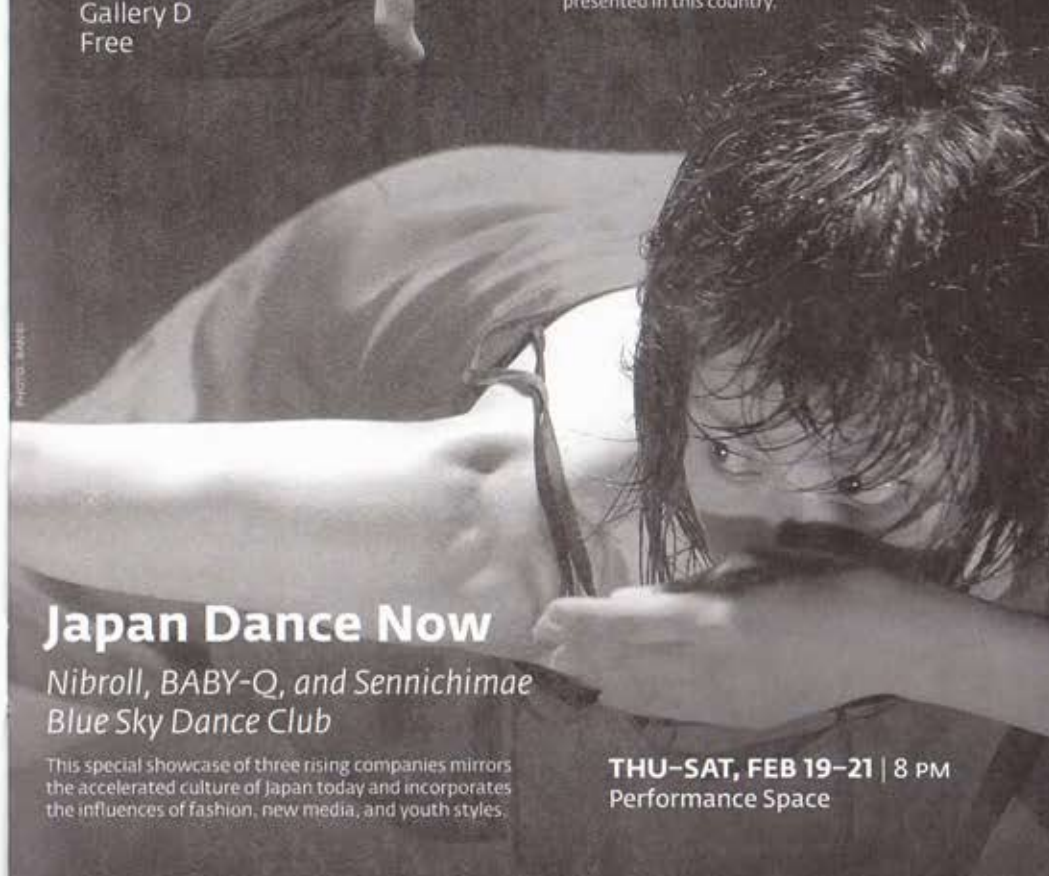


PHOTO: BAYNE

Japan Dance Now

Nibroll, BABY-Q, and Sennichimae
Blue Sky Dance Club

This special showcase of three rising companies mirrors the accelerated culture of Japan today and incorporates the influences of fashion, new media, and youth styles.

THU-SAT, FEB 19-21 | 8 PM
Performance Space

find more at WEXARTS.ORG

TICKETS—(614) 292-3535

OR TICKETMASTER.COM, (614) 431-3600

THANKS

We thank our most generous donors*

| | |
|--|---|
| Abercrombie & Fitch | The Macerich Company |
| Acloché | Mall Properties |
| AEP Ohio | Manchu |
| Alliance Data Systems | Microsoft Corporation |
| American Electric Power Foundation | M/I Homes |
| Bank of America | Mills James Productions |
| Battelle | National Endowment for the Arts |
| The Blackwell Inn | Nationwide |
| The Broad Art Foundation | Nationwide Foundation |
| Cappemini | Nationwide Insurance |
| Cardinal Health | NCR |
| Colucci & Umans | Nimoy Foundation |
| The Columbus Foundation | Ohio Arts Council |
| Florence E. K. Hurd Fund | Carole and Morton Olshan |
| Fred R. Place Fund | The Pizzuti Family Foundation |
| William O. Queen Fund | PREIT |
| Janet Leonard Reading Fund | Resource Interactive |
| Commercial Contractors Inc. | Marshall Rose and Candice Bergen |
| Concept Creator Fashion Ltd. | Joyce and Charles Shenk |
| Corna/Kokosing Construction Company | Sogeti USA |
| Davis Polk & Wardwell | The Taubman Company |
| Doris Duke Charitable Foundation Express | Teradata |
| The Forbes Company | Time Warner Cable |
| General Growth Properties, Inc. | Tri Tech Laboratories, Inc. |
| The Georgetown Company | Triumph International Spiesshofer & Braun Kommanditgesellschaft |
| Ann and Gordon Getty Foundation | Trueman Family Foundation |
| Glimcher | Univar USA |
| Global Lead Management Consulting | Valco Associates, Inc. |
| Greater Columbus Arts Council | Vee Pak, Inc. |
| Agnes Gund and Daniel Shapiro | Vorys Sater Seymour and Pease LLP |
| Huntington Bank | Ward & Olivo |
| Mary G. and C. Robert Kidder | The Andy Warhol Foundation for the Visual Arts |
| Bill and Sheila Lambert | Abigail and Leslie Wexner |
| Limited Brands | Ann and John F. Wolfe |
| LT Custom Furnishings Inc. | |

The Wexner Center for the Arts is part of **The Ohio State University** and receives major public institutional support from the university. Support is also provided by **Wexner Center members** and through the **Corporate Annual Fund of the Wexner Center Foundation**. The foundation is a private, nonprofit partner of the university's Board of Trustees, established to provide trustee guidance and financial support for the Wexner Center.

List reflects annual gifts and pledges of \$25,000 or more, as of January 20, 2009.

WEXNER CENTER FOUNDATION BOARD OF TRUSTEES

Leslie H. Wexner, *Chair*
E. Gordon Gee, *Vice Chair*
C. Robert Kidder, *President*

Trustees

David M. Aronowitz
Michael J. Canter
Carl L. English
Sherrri Geldin
Ann Gilbert Getty
Michael P. Glimcher
Elizabeth Kessler
James E. Kunk
Bill Lambert
James Lyski
Ronald A. Pizzuti
Marshall Rose
Robert H. Schottenstein

Joyce Shenk
Alex Shumate
A. Alfred Taubman
Barbara Trueman
Ric Wanetik
Abigail S. Wexner
John F. Wolfe

Ex Officio

Joseph A. Alutto
Karen A. Bell
Bruce A. Soll
Mark E. Vannatta

WEXNER CENTER FOR THE ARTS

Director Sherrri Geldin
Deputy Director Jack Jackson

PERFORMING ARTS & SUPPORT STAFF

Director of Performing Arts Charles R. Helm
Performing Arts Program Associate Barbara Thatcher
Contracts & Facilities Rentals Manager ... Claudia Bonham
Director of Technical Services John A. Smith
Stage Managers William J. Barto
Andrew Hensler
Engineers Scott Austin
Stephen Jones
Michael Sullivan
Lighting Supervisor Ryan J. Osborn
Stage Crew Stagehands Local 12
Director of Patron Services Michele Mooney
Patron Services Managers Madeline Khurma
Mark Spurgeon
Patron Services Coordinators Zachary A. Bodish
Helyn Dell
Joanna Hammer
Patron Services Assistants Elise Bailey
Stephanie Varnacini

VOLUNTEER USHER CORPS

Emily Ach
LaDonna Adams
Jan Alloy
Lisa Anfang
Erin Anthony
Andre Belz
Laura Bidwa
Dolores Blankenship
Whitney Brooks
Emily Brown
Elise Burgess
Monica Cantu
Constance Carroll
Grace Chang
Vicki Chay-Wilkins
Chu Young Chon
Esther Connors
Patrick Copeland
Sally Crandall
Jo Ann Damon
Charlotte D'Augustine
Jack Davis
Greg Dew
Catherine Doran
Jim Dorsey
Nancy Dorsey
Katie Dowling
Joan Droughton
Nick Droughton
Matthew Ducmanas
James Forbes
Michael Frangiamore
Monique Ganucheau
Mila Garcia
Marina Goldshteyn
Steve Goldsmith
Eva Goode
Ann Grabowsky
Amy Graff
Megan Greene
Deborah Guy
Abby Hollingshead
Kirsten Houck
Nicholas Iannone

Joe Inglis
Naomi Jacobs
Matt Jepsen
Kate Kennedy
Agnes Klinko
Kristi Kloss
Loribeth Kowalski
Natalia Krutovskaya
Julie Lapp
Faith Leibowitz
Zac Little
Holly C. Longfellow
Heather Mackling
Richard McClure
Anne McGorum
Erin McGovern
Kelly Meyer
Joan M. Moore
Ryan Neil
Maggie Neola
Caryn Neumann
Ryan Pavlovicz
Ryan Peters
Sergio Pierluissi
Jim Portman
Marquita Queeley
Dena Rapoport
Virginia Reynolds
Hannah Risher
John Roberts
Teresa Roberts
Tammy Roberts
Robin Robinson
Susan Roche
Emily Siemer
Carolyn Slebodnik
Laura Smales
Rachel Smith
Christine Soliman
Tricia Stanson
Bryan Straub
Yukari Sugiyama
Peg Tefft
Pamela Thomas

Tracie Tuss
Susan Van Ausdal
Kevin Vanscoder
Mariona Vitans
Amjad Waheed
Collin Ward
Richard Warren
Laura Wies
Mike Wilkins
Hertha Williams
Russell Wilson
Sarah Wise
Sofia Zinkovskaya

Especially for Members

All Wexner Center members receive free gallery admission; first access and discounts on performances, films, and education events; savings in the store and café; and much more. You can still park for up to 3 hours for FREE at the South Campus Gateway garage, too. (Bring your parking ticket to the info desk for validation.)

Set your web browsers to wexarts.org/members for online features available exclusively to you.

Not a member? Stop by the box office, head to wexarts.org/join, or call (614) 292-1777 to join now.

Tickets

Call (614) 292-3535 (TTY/TDD: 292-1210) or stop by the Patron Services Desk on the entrance level of the Wexner Center for attentive customer service and information on all our events. Ticketing services are also available one hour prior to events for sales and pick up of prepaid tickets. Sorry, no refunds or exchanges will be made unless an event is canceled. The Wexner Center is a Ticketmaster outlet.

Wexner Center for the Arts

The Ohio State University
1871 North High Street
Columbus, Ohio 43210-1393

WEXARTS.ORG

Policies

All programs are subject to change.

At some artists' requests, late seating will not be permitted at their performances. Where late seating is possible, latecomers will be admitted during a break so that their entrance will not disturb previously seated patrons.

Taking pictures and using recording devices are strictly prohibited. Please talk to the ticketing staff about checking your equipment.

Please turn off signal watches, pagers, and cell phones before the performance begins.

The Wexner Center strives to make our events and facilities accessible to all our patrons. If you have questions concerning access, please visit our web site (wexarts.org) or contact our patron services staff at (614) 688-3890 (TTY/TDD: 614 292-1210) or by e-mail to houseweb@wexarts.org.

A NOTE TO PATRONS WITH CHILDREN
Mershon Auditorium has a "crying room" for your convenience.