

METHODIST CENTER
FOR PERFORMING ARTS MEDICINE

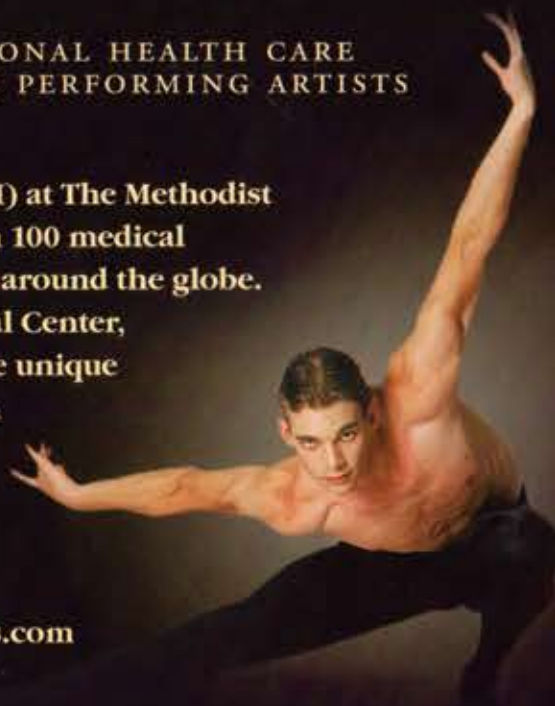


PUT OUR TALENTS
to work for yours

EXCEPTIONAL HEALTH CARE
FOR PERFORMING ARTISTS

Center for Performing Arts Medicine (CPAM) at The Methodist Hospital combines the talents of more than 100 medical experts to care for performing artists from around the globe. Based in Houston's renowned Texas Medical Center, CPAM also conducts research relating to the unique injuries and conditions affecting the health of performers and provides education for artists, students and instructors.

For an appointment or more information about CPAM, visit methodistperformingarts.com or call 713-394-6088. If you would like to make a contribution to CPAM, please call 832-667-5806.



Methodist The Methodist
Hospital
Houston, Texas

HOUSTON BALLET
STANTON WELLS, ARTISTIC DIRECTOR

 **HoustonGrandOpera**
Anthony Freud, General Director
Patrick Summers, Music Director

HOUSTON SYMPHONY
DAVID GARDNER, MUSIC DIRECTOR

SPA

SOCIETY FOR THE PERFORMING ARTS
Bringing the World's Best to Houston

SOCIETY FOR THE PERFORMING ARTS
MAGAZINE
Fall 2008/Winter 2009

Inside This Issue:

Chaya Alberstein

The Song & Dance Ensemble
of West Africa

Fiesta Navidad
Mariachi Los Camperos
de Nani Cano

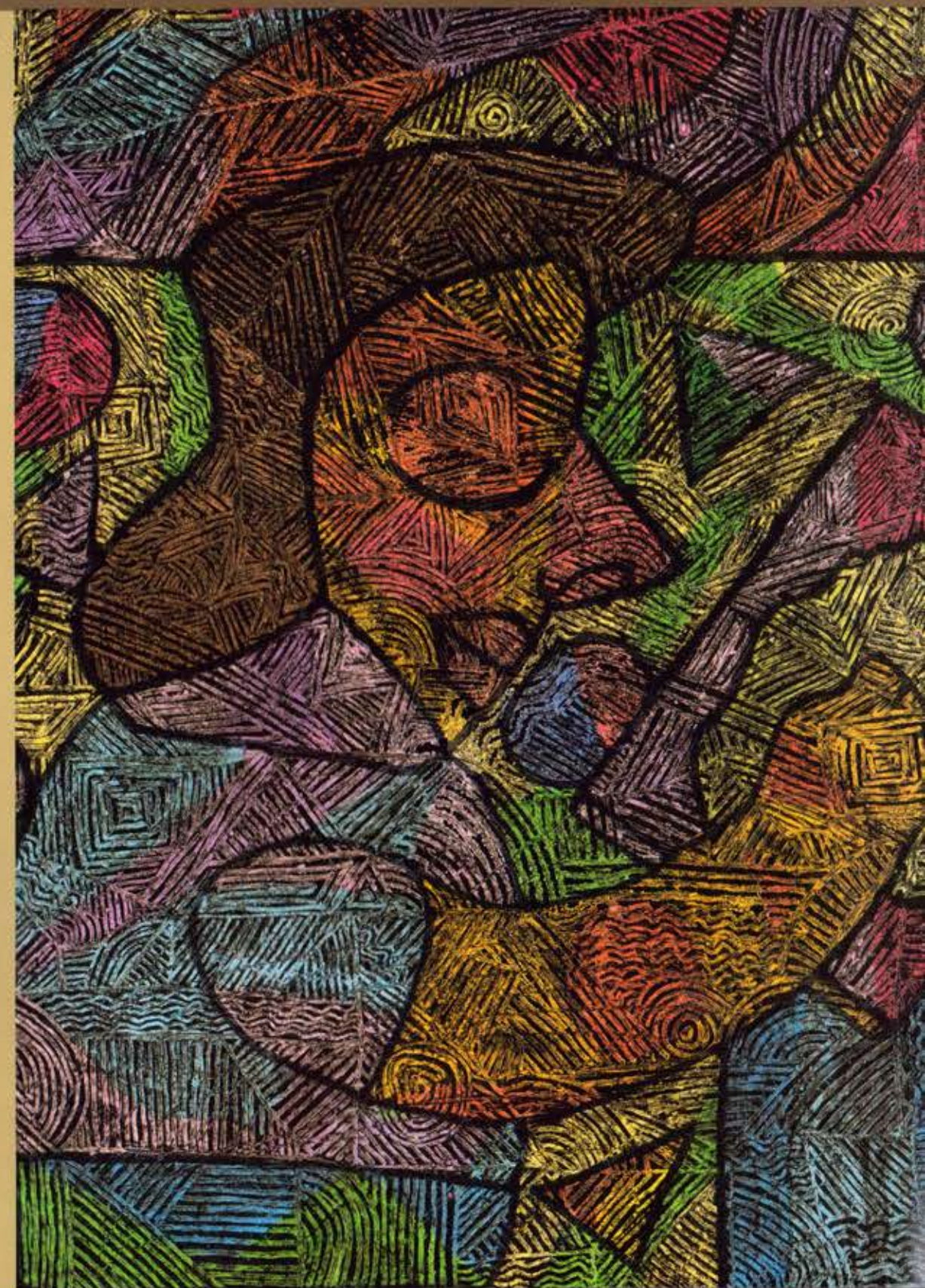
DRUMLine Live

Bansheva Dance Company

Joshua Bell, violin &
Jeremy Denk, piano

Los Ballets Trockadero
de Monte Carlo

www.spahouston.org
713.227.4SPA



With a Chorus Like This, Who Needs a "Line"?



Photo credits from left: Brett Coomer, George Hixon, Felix Sanchez, Brett Coomer

Various composers

CHORUS!

“Integral to the fiery drama (the HGO Chorus) sang with gripping intensity”
— *Houston Chronicle*

January 30 – February 13, 2009

Conducted by Patrick Summers.

Directed by David Pountney.

Fully staged and costumed, this evening of drama and spectacle features HGO Chorus in works by Verdi, Wagner, Puccini and many others.

Chorus and Orchestra of Houston Grand Opera

Richard Bado, Chorus Master



HoustonGrandOpera

Anthony Freud, General Director
Patrick Summers, Music Director

www.HoustonGrandOpera.org

713.228.OPERA (6737)

Albert and Anne Chao / Ting Tsung and Wei Fong Chao Foundation
The Humphreys Foundation

Vinson&Elkins

Continental Airlines
Official Airline of Houston Grand Opera

LEXUS
YOUR HOUSTON AREA LEXUS DEALER.
Official Vehicle of Houston Grand Opera

Methodist The Methodist Hospital
Center for Performing Arts Medicine
Official Healthcare Provider to Houston Grand Opera

Happy Holidays!

2727 KIRBY

The time is now.



Make your Holiday wishes come true.
At 2727 Kirby, it's all about you.



Above it All.

Exclusive Residences & Private-access Estates

Design and Presentation Center located at 2700 W. Alabama • 713.528.2722 • www.2727kirby.com



Cover Illustration by:
Abigail Garcia, 7th Grade
Stovall Middle School
Title: African Art Class

Artwork selected from SPA's 10th Annual Wells Fargo Student Visual Art Contest, "Reflections of Heritage: Pride in the Past; Hope for the Future."

CONTENTS

Staff.....	4
Welcome	5
Patron Information	5
Chava Alberstein	6
The Song & Dance Ensemble of West Africa	8
Fiesta Navidad, Mariachi Los Camperos de Nati Cano ...	10-12, 14-15
DRUMLine Live.....	15
Batsheva Dance Company	16-17
Joshua Bell, violin & Jeremy Denk, piano	18-19
Les Ballets Trockadero de Monte Carlo	20-22
SPA Corporate and Foundation Support	23
Individual Donors.....	23-24
SPA 2008-09 Board of Directors	24

This magazine is produced for
Society for the Performing Arts by

newleaf
PUBLISHING INC.
Publications That Perform

2006 Huldry
Houston, TX 77019
www.newleafinc.com

Advertising 713-523-5323
info@newleafinc.com

John Buck
Shelly Grimm
713-523-5323

Sharon St. Romain Frank
713-498-4403

Frances Powell
409-744-6540

Marlene Walker
713-524-3560

SPA

SOCIETY FOR THE PERFORMING ARTS
Bringing the World's Best to Houston
615 Louisiana St. #100
Houston, TX 77002-2796
713-227-4SPA

Visit SPA's website at www.spahouston.org

Executive Director & CEO, June Christensen
Editorial Director, Karen Watassek
Assistant Editor, Charlotte Cobb

Contents copyright © 2008 by Society for the Performing Arts

LINSCOMB & WILLIAMS

Established 1971

A FINANCIAL ADVISORY FIRM OF FORMER PRACTICING
ATTORNEYS AND CERTIFIED PUBLIC ACCOUNTANTS



Providing Objective Fee Based Services

FINANCIAL PLANNING

ESTATE
RETIREMENT
TAX

INVESTMENT MANAGEMENT

Repeat Winner



for Client Service

"With so much at stake, shouldn't you get a second opinion?"

CALL FOR A COMPLIMENTARY BROCHURE 713-840-1000 • 1-800-960-1200



Zero Maria Cornejo
Hoss Intropia
Rozae Nichols
Eileen Shields
Isabel Marant
Etoile Isabel Marant
Loeffler Randall
Epice
Organic
Majestic
Cotelac
Lavinia Turra
Reset
Humanoid
Virginia Johnson
Khadi
Ter Et Bantine
Hache
Rutzuo
Hazel Brown
Pool



2314 Bissonnet
Houston, TX 77005
713.526.4580

WEDNESDAY | JANUARY 28 | 8 PM | JONES HALL

BATSHEVA DANCE COMPANY

DECA DANCE BY OHAD NAHARIN

SELECTED EXCERPTS FROM WORKS BY OHAD NAHARIN

"It is a program made of sections from about eight or nine different works I have made in the past. I enjoy breaking down and reconstructing my work. It involves the subtraction of weight from its structure (so it can fly or at least float...) It teaches me a lot about composition, and enables me to look at many elements in the works from a new angle. By doing it, some of the elements become even more interesting and strong than in the original form." — Ohad Naharin

ORIGINAL DESIGN:

COSTUME

LIGHTING

SOUND

Rakefet Levy

Avi Yona Bueno – Bambi

Frankie Lievaart

BATSHEVA DANCE COMPANY:

ARTISTIC DIRECTOR

EXECUTIVE DIRECTOR, CO-ARTISTIC DIRECTOR

HOUSE CHOREOGRAPHER

INTERNATIONAL TOUR PRODUCER

COMPANY MANAGER & STAGE MANAGER

REHEARSAL DIRECTOR

TECHNICAL DIRECTOR

CHIEF ELECTRICIAN

SOUND

TECHNICIAN

WARDROBE

PHOTOGRAPHER

INTERNATIONAL TOUR MANAGEMENT

Ohad Naharin

Naomi Bloch Fortis

Sharon Eyal

Iris Bovshover

Yaniv Nagar

Luc Jacobs

Roni Cohen

Gadi Glik

Moshe Shasho

Sharon Shoshan

Eyal Goldberg, Ofer Amram

Gadi Dagon

Dina Aldor, Aladdin Ltd.

TOUR PRODUCED BY DAVID EDEN PRODUCTIONS, LTD.

GENERAL MANAGER

COMPANY MANAGER

VISA COORDINATOR

Erica Charpentier

Pat Kirby

Stonie Darling

IN ASSOCIATION WITH H-ART MANAGEMENT

Harold Norris, President

(212) 666-0337, www.h-artmanagement.com

The Batsheva Dance Company is generously supported by the Israeli Ministry of Education, Culture, and Sport; the Israeli Ministry of Foreign Affairs—Division of Cultural and Scientific Affairs; the Tel Aviv Municipality; the Israel National Lottery—Council for the Arts; United Jewish Communities, Israel; America-Israel Cultural Foundation; The Rich Foundation; Mr. Robert Weil—Proventus; The Kenny Family and Eastonics; Teva Pharmaceutical Industries; The Dellal Family; The Sokolovsky Family; The Arison Family Foundation; The Peterburg Family; Dani Karavan; the Isrotel Chain of Hotels; HP Indigo; Shuki Zikri; ORS Human Resources; Top Audio; Bank HaPoalim; Cellcom; IDB Foundation for the Community; Michael Sela Fund for the Support of Young Artists in Batsheva; and the American Friends of Batsheva.

To learn more about Batsheva please visit: www.batsheva.co.il or email batsheva@batsheva.co.il.

Batsheva Dance Company and the Batsheva Ensemble are the resident companies at the Suzanne Dellal Centre for Dance and Theatre, 6 Yechiel St., Tel-Aviv 65149; Tel: +972 3 5171471 Fax: +972 3 5160231, E-mail: batsheva@batsheva.co.il

Presented in partnership with the Jewish Community Center Dance Month at the Kaplan Theatre in celebration of the 60th anniversary of Israel.

I W Marks Jewelers

WEIL, GOTSHAL & MANGES LLP



Arts Talks! funded by



Part of the Performance Prelude Series



The official airline of SPA.



ABOUT BATSHEVA DANCE COMPANY

Batsheva's artistic integrity and innovation have earned the company its reputation as one of the most inspirational and sought after companies—a true champion on the global map of performing arts.

Batsheva operates throughout the year with its two companies and 40 dancers. With 250 annual performances in Israel and around the world, the company is considered Israel's leading cultural ambassador.

Batsheva is applauded worldwide in the most prestigious theaters and festivals including Lincoln Center, BAM, and Jacob's Pillow festivals; and London's Barbican Centre, and Paris's Theatre de la Ville.

The company includes dancers from Israel and abroad who are encouraged to affirm their distinct creative gifts either in the rehearsal process or in the creation of their own works during the annual Batsheva Dancers' Workshop series.

Many of Batsheva's dancers developed their skills during an extensive training period in the junior company, the Batsheva Ensemble. The Ensemble serves as a greenhouse for the next generation of dancers and choreographers, dedicating the majority of its time to Batsheva's comprehensive outreach and education program.

Batsheva Dance Company was founded in 1964 by Martha Graham and Baroness Batsheva De Rothschild. To learn more about Batsheva, please visit www.batsheva.co.il.

ABOUT OHAD NAHARIN,

Choreographer, Artistic Director of Batsheva Dance Company

Naharin began his training as a dancer with Batsheva Dance Company. He went to New York one year later at the invitation of Martha Graham to join her company, as well as to make use of a scholarship to the School of American

BATSHEVA DANCE COMPANY

Ballet. After one year with the Martha Graham Dance Company, he continued his studies at The Juilliard School of Music, as well as with Maggie Black and David Howard. He then joined the Maurice Bejart Company in Brussels for one season and made his choreographic debut in 1980 in the Kazuko Hirabayashi Studio in New York. From 1980 to 1990 he performed and worked in New York, where he lived with his wife, the dancer Mari Kajiwaru, who died of cancer in 2001. In 1990 he was appointed Artistic Director of the Batsheva Dance Company.

Naharin has been the recipient of many awards and honors, including the Chevalier de l'Ordre des Arts et des Lettres by the French government in 1998, two New York Dance and Performance (Bessie) Awards (for *Virus* at the Brooklyn Academy of Music in 2002 and for *Anaphaza* at Lincoln Center Festival in 2003), a Doctor of Philosophy honoris causa by the Weizmann Institute of Science in 2004, and the prestigious Israel Prize for dance in 2005. Naharin's works are performed by many companies throughout the world, including Nederlands Dans Theater, Frankfurt Ballet, Lyon Opera Ballet, Ballet Nacional d'Espana (Madrid), Cullberg Ballet (Sweden), and the Opera National de Paris, among others.

AVI YONA BUENO (Bambi),

Lighting Design

Avi Yona Bueno (Bambi) started his career as a lighting designer for rock concerts, working with leading Israeli bands and artists such as Ofra Haza, Achinoam Nini, Arik Einstein, Shalom Hanoch, Shlomo Artsi, Yehudit Ravits, Fortis, Rita, and Natasha. Between 1982 and 1986 Bambi lived in London and worked for Britannia Row Productions, Pink Floyd's lighting company. He has toured Europe with various artists, including Meatloaf, Mike Oldfield, The Cure, Roger Waters, David Gilmour, Dizzy Gillespie, and the Thompson Twins, among others. He has designed for many Israeli theaters, including Gesher Theatre, Itim Ensemble, Cameri Theatre, Habima National Theatre, and the Beer Sheva Theatre, as well as for companies abroad including Nederlands Dans Theatre, Frankfurt Ballet, Nacional Ballet Spain, Cullberg Ballet, Les Grands Ballets Canadiens, Gulbenkian Ballet, Lyon Opera Ballet, Marseilles Ballet, and Nacional Finnish Ballet, among others. His awards include the Yair Shapira Fund award in 1993 and the Lighting Designer of the Year award every year since 1995. Bambi designs for most production, by the New Israeli Opera and for opera houses in Tokyo, Amsterdam, Bilbao, and

Nice, among others. He designs for musicals, museum installations, large outdoor rock events, and multimedia shows, and has designed for the Israeli Philharmonic Orchestra's outdoor concerts and the Eurovision.

RAKEFET LEVY, Costume Design

Born in 1958, Rakefet Levy graduated from the Ramat Hasharon School of Fine Arts and was a student and teacher at the Shenkar College of Engineering and Design. Recently she opened the School of Design for the Performing Arts next to the Israeli Opera and the Cameri Theatre in Tel Aviv. Since 1982 she has been a stage, set, and costume designer for television programs, as well as opera, dance, and film productions, in Israel and internationally. Levy has designed for the theater and has worked with Israeli playwright and director Hanoch Levin. Since designing the costumes for Ohad Naharin's *Arbos* (1991), Levy has become a regular partner to his work in Israel and abroad.

FRANKIE LIEVVART, Sound Design

Born in the Netherlands in 1963, Frankie Lievvart roamed the globe for more than 10 years. A self-proclaimed sound designer, he is still in search of the secret of subsonic frequencies.

check out ARTLEAGUEHOUSTON.ORG

FOR INFORMATION ON LECTURES, WORKSHOPS & OTHER EVENTS.



ART EXHIBITIONS
STUDIO ART CLASSES
WORKSHOPS
OUTREACH
LIFE DRAWING LABS
PLEIN AIR PAINTING
FAMILY WORKSHOPS

contact us

1953 Montrose Blvd
Houston, TX 77006

713.523.9530

info@artleaguehouston.org

M-F 9 am - 5 pm + Sat 11 am - 5 pm

MAKE ART + HAVE FUN

art
leaguehouston